

小型HST (液压无极变速器)

COMPACT HST (Hydrostatic Transmission)

HVFD5F-R12.5



HST与液压泵是由同一个电机构成的液压无极变速器。

采用的是球面阀板，从低速运转到高速运转的广泛范围内都能发挥极高的性能，可用于所有的用途。

Takako's integrated HST unit is engineered with a continuously variable control mechanism. With a spherical valve plate (SVP) design this HST is highly efficient through a wide range of output speeds and can be installed into many different applications.

特长 / Important Features

高性能 High performance

从低速运转到高速运转均性能稳定

采用球面阀板

Stable performance through a wide range of output speeds.

Design incorporates a spherical valve plate design concept.

节省空间 Ergonomic

安装灵活

轻量型 · 紧凑化

Great flexibility for application installation.

Light-weight · Compact size

安全 Safety

对高负荷的保护性能

超压切断阀 标配

Protection from excessive pressure differential.

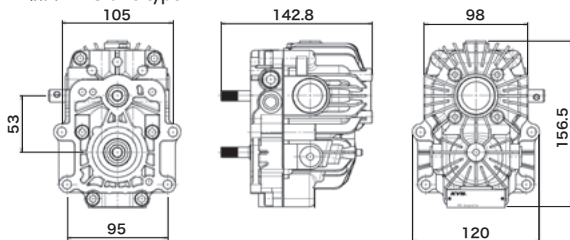
A surge cut-off valve is incorporated

基本规格 / Basic Specifications

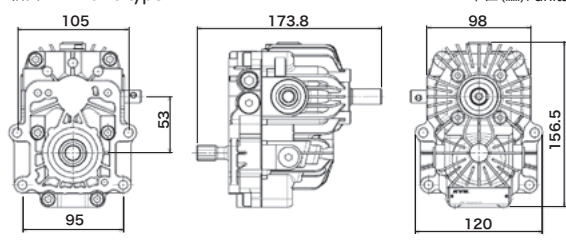
泵 / Pump		电机 / Motor		最高输入转速 / Max. input speed (min ⁻¹)	U轴/Z轴类型 (标配) U axis/Z axis (standard)
排量 / Displacement (cm ³)	斜板角度 / Swash plate angle (°)	排量 / Displacement (cm ³)	斜板角度 / Swash plate angle (°)		
5.0	0~±13.5	5.0	13.5	3000	体积 / Volume 1200cm ³
最高使用压力 / Max. pressure 最高 (MPa)	最大输出扭矩 / Max. output torque (N·m)	超压切断阀 / surge cut-off valve (MPa)	质量 / Weight (kg)	机油粘度 / Viscous grade (ISO VG)	油量 / Oil 240cm ³
12.5	10	20~25	2.4	32或者46	安装螺栓 / Bolt M8 (4个)

外形尺寸 / Dimensions

U轴类型 / U axis type



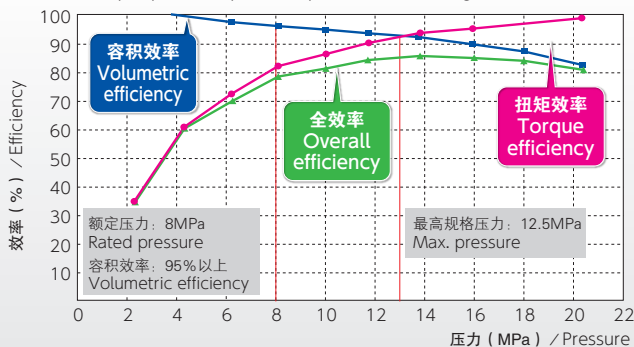
Z轴类型 / Z axis type



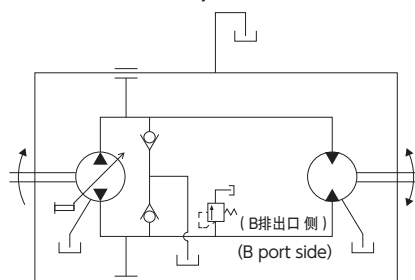
单位 (mm)/units

性能曲线 / Performance Curve

【测试条件】输入转速：3000min⁻¹ / 油温：40℃ / 作动油：ISOVG32 / 1 / 1行程
 <test condition> Input speed 3000rpm/Oil temperature 40℃/Viscous grade ISOVG32/Stroke 1/1



液压回路图 / Hydraulic circuit



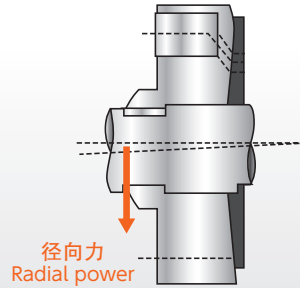
可靠性 / Reliability

采用球面阀板 Spherical Valve Plate (SVP) design is adopted

通过采用球面阀板可实现性能的稳定性，抗污垢性能也很优良。

The SVP design creates very stable and highly efficient performance. This design is also more tolerant of system contamination.

球面阀板图 / SVP design



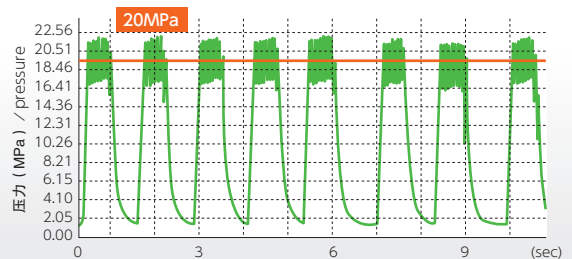
安全性 / Safety

采用超压切断阀 A pressure relief valve is incorporated

作为对高负荷的HST保护性能，标配的是超压切断阀。

This Compact HST has a surge cut-off valve to protect the transmission from an excessive pressure differential.

超压切断曲线图 / Pressure Response Graph



小型HST搭载例 / Application Examples

小型HST作为行驶用或者作业用，被广泛地应用于除雪机、草坪割草机、花园用拖拉机、搬运车、耕耘机等机械上。

Compact HST is designed and used to meet the vehicle's ground drive propulsion requirements for snow blowers, lawn mowers, agricultural carts and tractors etc.

行驶用HST采用例 / HST Application examples



※本产品以KYB品牌销售。
*This HST is sold under the brand name of KYB.



仅利用1个拉杆就能进行前进后退、停止及调速操作。

The HST can provide clockwise output or transition through stopped to counter-clockwise rotation with one lever control.

株式会社 TAKAKO 为 KYB 集团下属企业。 Takako Industries Inc. is a member of KYB group.



总公司 〒619-0240 京都府相乐郡精華町祝园西一丁目 32 番地 1
TEL: 0774-95-3376 (咨询) FAX: 0774-95-3337
URL: <http://www.takako-inc.com/chinese/>

Head office 1-32-1, Housono-Nishi, Seika-Cho, Souraku-Gun, Kyoto 619-0240, Japan
TEL: +81-774-95-3376 FAX: +81-774-95-3337
URL: <http://www.takako-inc.com/english/>

- 关于产品的咨询等请按左侧所述的联系地址进行联系。
- 产品目录上刊载的各产品，有时会出现因为改良不事先通告更改规格的情况。
- 产品目录上所刊载的内容严禁擅自挪用。
- 产品目录上所刊载的数值有时因规格条件会发生更改。
- Please contact Takako Sales Department for clarification of details.
- These products are subject to change for improvements without prior notification.
- Any copy or reproduction of this material without written permission is prohibited.
- Numerical values used here may vary depending on the specific specifications.